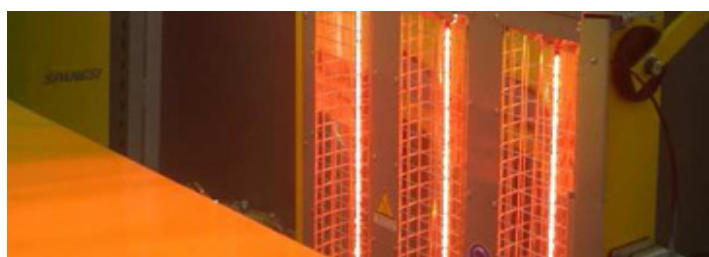


Fast Medium Wave Infrared Emitters



TOSHIBA PULSAR emitters, HYBRID infrared, are the fast response short & medium wave infrared heater and can be switched on and off within few seconds, converting more than 85% of input power into infrared heat to meet the voice of professional users.

The HYBRID infrared is particularly matched to drying process for surface and/or thin materials in plastics, textile, automotive, printing industry and numerous industrial processes.

TOSHIBA PULSAR emitters are state of the art and comprise finely coiled tungsten filament surrounded by a quartz glass and a kind of halogen gas filled emitter. Halogen cycle ensures constant infrared efficiency all the lifetime with preventing the quartz glass from blackening.

TOSHIBA PULSAR emitters, give more than 85% of full power into infrared heat as it is a halogen emitter, whilst 60 to 70% by a classical quartz heater and less than 50% by a metal-sheathed heater.

PULSAR gives also instant heat and can switched on within few seconds – see Fig.2

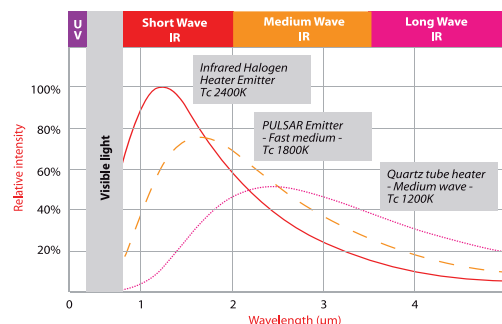
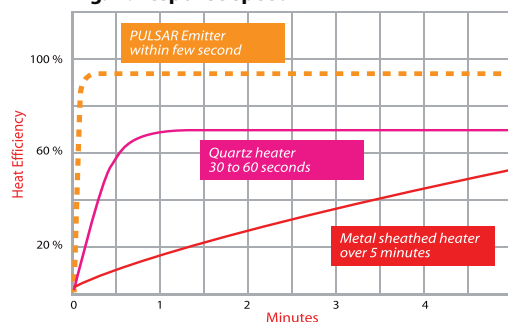


Fig. 2 : Response speed



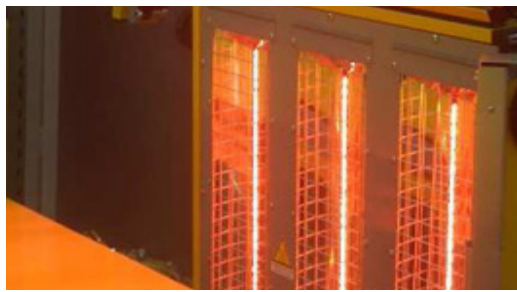
- > Emitting HYBRID medium infrared waveband from short to medium wave at 1.6µm peak wavelength – see Fig.1
- > HYBRID color temperature around 1800 Kelvin (around 1500°C) – see Fig.1
- > High efficiency: more than 85% of input power into infrared heat.
- > High speed within few seconds
- > High power density up to 71W/cm
- > Long life 5000h on average

Benefits & Features

PULSAR

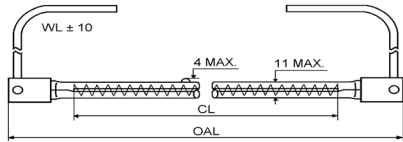
Connect to :
www.toshiba-lighting.com

Contact us :
TOSHIBA LIGHTING PRODUCTS (France)
42 Rue St Dizier
54000 Nancy
Phone : + 33 (0) 3 83 39 00 83

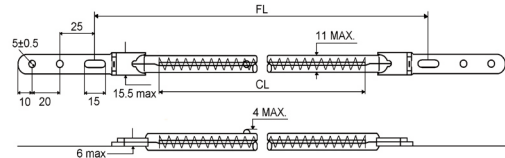


Fast Medium Wave Infrared Emitters

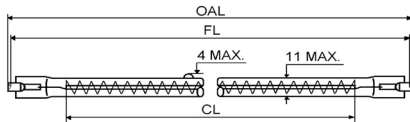
Type B/Bf



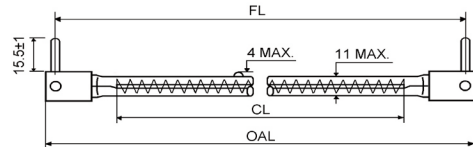
Type J



Type R7s



Type I



Part code	Watts (W)	Volts (V)	Base Type	Overall length OAL (mm)	Fixation length FL (mm)	Heating length CL (mm)	Wire Length WL (mm)	Terminal	Color temp.(K)	Tube	Burning position	Ave. Life	Ordering code
1000 WATTS													
JHM 235V 1000W 272 BfH	1000	230-240	Bf	352±2	-	272±5	300±10	Splice	1850	Frosted	Horizontal	5000	2JHM018
JHM 235V 1000W 272 BfU	1000	230-240	Bf	352±2	-	272±5	230±10	Splice	1850	Clear	Universal	5000	2JHM003
JHM 235V 1000W 272 JU	1000	230-240	Bf	-	370±10	272±5	-	-	1850	Clear	Universal	5000	2JHM010
JHM 235V 1000W 272 IU	1000	230-240	I	(354)	346±1	272±5	1000±10	-	1850	Clear	Universal	5000	2JHM017
JHM 230V 1000W 410 BfU	1000	230-240	Bf	490±2	-	410±5	230±10	Splice	1800	Clear	Universal	5000	2JHM022
1500 WATTS													
JHM 235V 1500W 280 BfH	1500	230-240	Bf	352±2	-	280±5	300±10	Splice	1850	Frosted	Horizontal	5000	2JHM019
JHM 235V 1500W 280 BfU	1500	230-240	Bf	352±2	-	280±5	230±10	Splice	1850	Clear	Universal	5000	EM-519
JHM 235V 1500W 280 JU	1500	230-240	J	-	370±10	280±5	-	-	1850	Clear	Universal	5000	2JHM011
JHM 235V 1500W 280 RsH	1500	230-240	Rs	(348)	346±1,5	280±5	-	-	1800	Frosted	Horizontal	5000	2JHM021
JHM 235V 1500W 410 BfU	1500	230-240	Bf	490±2	-	410±5	230±10	Splice	1850	Clear	Universal	5000	2JHM014
2000 WATTS													
*JHM 235V 2000W 280 BU	2000	230-240	B	352±2	-	280±5	300±10	Faston	1800	Frosted	Universal	5000	2JHM030
*JHM 235V 2000W 280 JU	2000	230-240	J	-	370±10	280±5	-	-	1800	Clear	Universal	5000	2JHM009
JHM 400V 2000W 410 BfU	2000	400	Bf	490±2	-	410±5	200±10	Fork	1850	Clear	Universal	5000	EM-573
JHM 400V 2000W 410 JU	2000	400	J	-	508±10	410±5	-	-	1850	Clear	Universal	5000	2JHM001
3000 WATTS													
JHM 400V 3000W 700 JU	3000	400	J	-	798±10	700±5	-	-	1800	Clear	Universal	5000	EM-647
JHM 400V 3000W 700 BfU	3000	400	Bf	780±2	-	700±5	200±10	Fork	1850	Clear	Universal	5000	EM-574

*Tube diameter is 13mm max

Connect to :
www.toshiba-lighting.com

Contact us :
 TOSHIBA LIGHTING PRODUCTS (France)
 42 Rue St Dizier
 54000 Nancy
 Phone : + 33 (0) 3 83 39 00 83