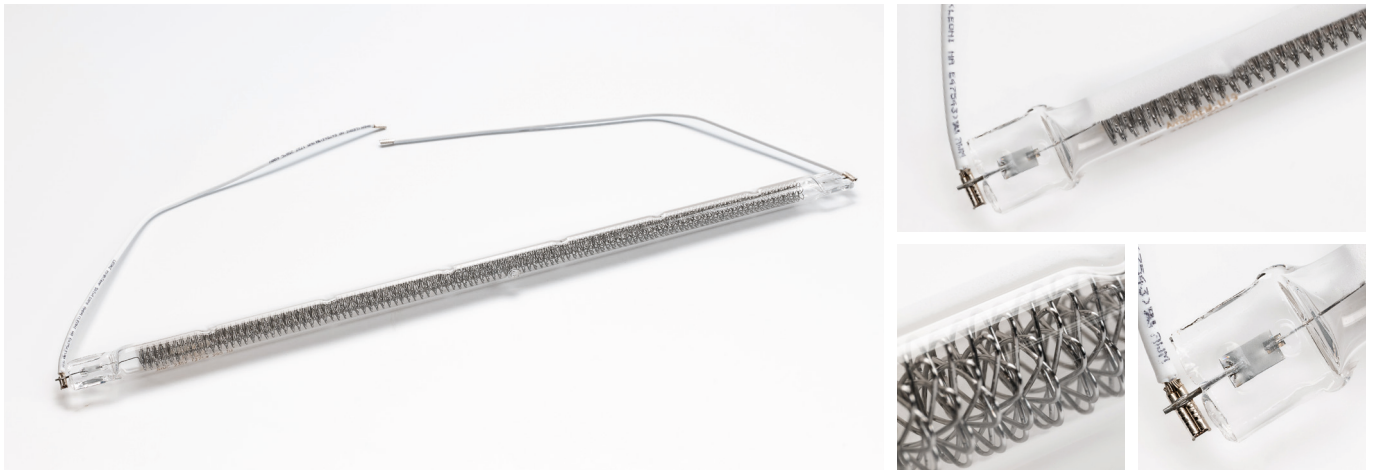


## Fast Medium Wave Infrared Emitters

# Pulsar

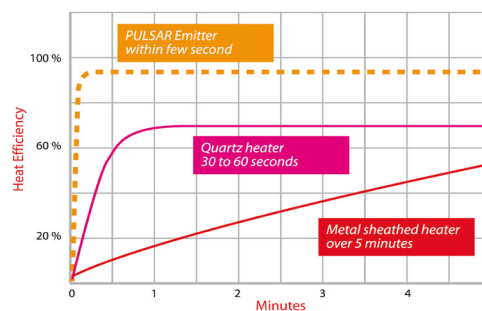
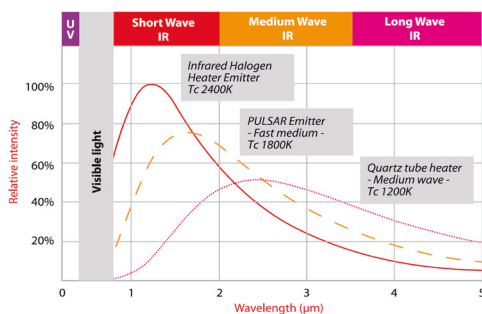


**TOSHIBA PULSAR emitters**, HYBRID infrared, are the fast response short & medium wave infrared heater and can be switched on and off within few seconds, converting more than 85% of input power into infrared heat to meet the voice of professional users. The HYBRID infrared is particularly matched to drying process for surface and/or thin materials in plastics, textile, automotive, printing industry and numerous industrial processes.

**TOSHIBA PULSAR emitters** are state of the art and comprise finely coiled tungsten filament surrounded by a quartz glass and a kind of halogen gas filled emitter. Halogen cycle ensures constant infrared efficiency all the lifetime with preventing the quartz glass from blackening.

**TOSHIBA PULSAR emitters**, give more than 85% of full power into infrared heat as it is a halogen emitter, whilst 60 to 70% by a classical quartz heater and less than 50% by a metal-sheathed heater.

PULSAR gives also instant heat and can be switched on within few seconds - see Fig.2



**Fig. 2 :**  
Response speed

### Benefits & Features

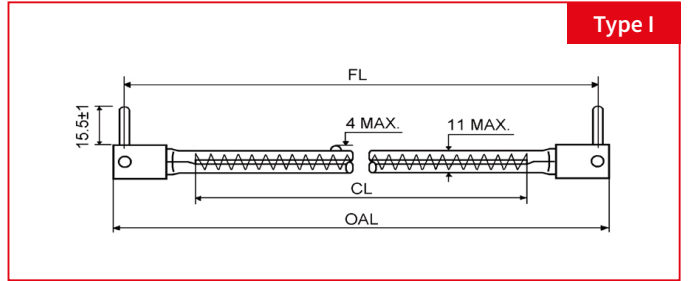
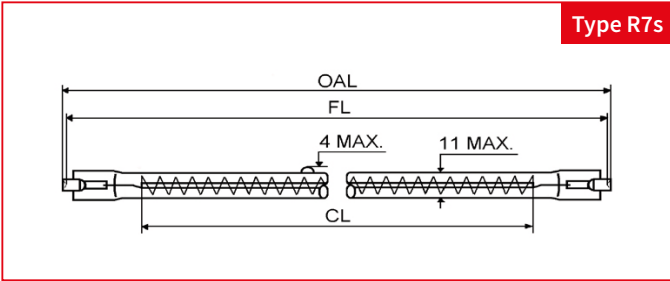
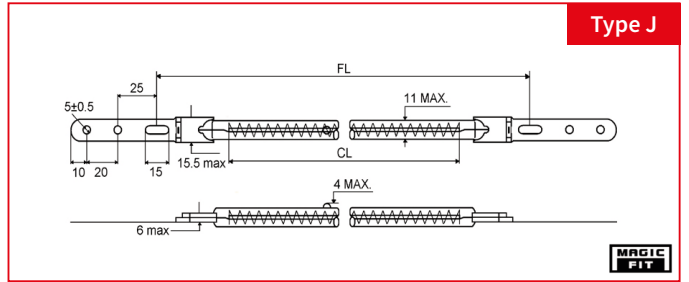
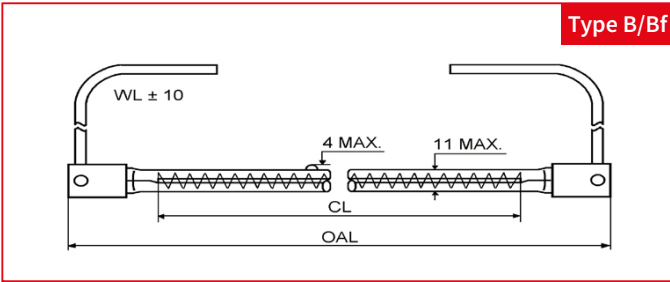
- › Fashionable restaurants and cafés
- › Holy places like religious buildings (churches, mosques, temples, etc...)
- › Sports complexes and exhibition centres
- › Workshops, warehouses and factories
- › Garages and terraces
- › De-icing

**Toshiba Lighting Products (France) S.A.**

42 Rue St Dizier, 54000 Nancy Phone : + 33 (0) 3 83 39 00 83 [www.toshiba-lighting.com](http://www.toshiba-lighting.com)



# Pulsar



Designation	Watts (W)	Volts (V)	Base Type	Overall length OAL (mm)	Fixation length FL (mm)	Heating length CL (mm)	Wire length WL (mm)	Connection / Terminal end	Color temp. (k)	Tube	Burning position	Ave. Life (hrs)	Product code
<b>1000 WATTS</b>													
JHM 235V 1000W 272 BfH	1000	230-240	Bf	352±2	-	272±5	300±10	Splice	1850	Frosted	Horizontal	5000	2JHM018
JHM 235V 1000W 272 BfU	1000	230-240	Bf	352±2	-	272±5	300±10	Splice	1850	Clear	Universal	5000	2JHM003
JHM 235V 1000W 272 JU	1000	230-240	Bf	-	370±10	272±5	-	-	1850	Clear	Universal	5000	2JHM010
JHM 235V 1000W 272 IU	1000	230-240	I	(354)	346±1	272±5	1000±10	-	1850	Clear	Universal	5000	2JHM017
JHM 230V 1000W 410 BfU	1000	230-240	Bf	490±2	-	410±5	230±10	Splice	1850	Clear	Universal	5000	2JHM022
<b>1500 WATTS</b>													
JHM 235V 1500W 280 BfH	1500	230-240	Bf	352±2	-	280±5	300±10	Splice	1850	Frosted	Horizontal	5000	2JHM019
JHM 235V 1500W 280 BfU	1500	230-240	Bf	352±2	-	280±5	230±10	Splice	1850	Clear	Universal	5000	EM-519
JHM 235V 1500W 280 JU	1500	230-240	J	-	370±10	280±5	-	-	1850	Clear	Universal	5000	2JHM011
JHM 235V 1500W 280 RsH	1500	230-240	Rs	(348)	346±1,5	280±5	-	-	1850	Frosted	Horizontal	5000	2JHM021
JHM 235V 1500W 410 BfU	1500	230-240	Bf	490±2	-	410±5	230±10	Splice	1850	Clear	Universal	5000	2JHM014
<b>2000 WATTS</b>													
*JHM 235V 2000W 280 BU	2000	230-240	B	352±2	-	280±5	300±10	Faston	1800	Frosted	Universal	5000	2JHM030
*JHM 235V 2000W 280 JU	2000	230-240	J	-	370±10	280±5	-	-	1800	Clear	Universal	5000	2JHM009
JHM 400V 2000W 410 BfU	2000	400	Bf	490±2	-	410±5	200±10	Fork	1850	Clear	Universal	5000	EM-573
JHM 400V 2000W 410 JU	2000	400	J	-	508±10	410±5	-	-	1850	Clear	Universal	5000	2JHM001
<b>3000 WATTS</b>													
JHM 400V 3000W 700 JU	3000	400	J	-	798±10	700±5	-	-	1800	Clear	Universal	5000	EM-647
JHM 400V 3000W 700 BfU	3000	400	Bf	780±2	-	700±5	300±10	Fork	1850	Clear	Universal	5000	EM-574

\*Tube diameter is 13mm max

Non-exhaustive list, for reference only. Possibility of customization.

## Toshiba Lighting Products (France) S.A.

42 Rue St Dizier, 54000 Nancy Phone : + 33 (0) 3 83 39 00 83 www.toshiba-lighting.com